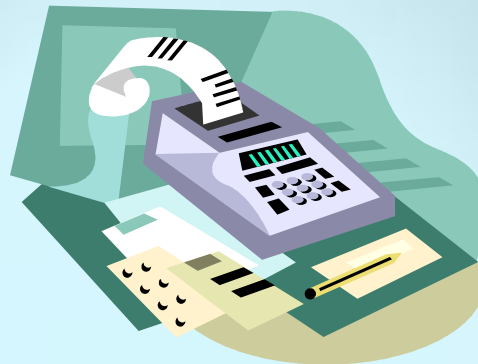




**2010-2011
BUDGET PRESENTATION**

September 21, 2010



Presentation Overview

- ❑ State Budget – Conference Committee Proposal
- ❑ Citrus College 2009-2010 Unaudited Actuals:
 - ❑ Revenue, Expenditures, Fund Balance
- ❑ Citrus College proposed 2010 - 2011 Adopted Budget:
 - ❑ Funding Priorities
 - ❑ Strategies for Cost Containment
 - ❑ Strategies for Revenue Generation
 - ❑ Funded Components
 - ❑ Estimated Revenue, Expenditures and Deficit Spending
- ❑ Summary of Funded FTES – (2003 – 2011)
- ❑ Budget Calendar for 2010-2011

State Budget 2010-11 Update

- **No State budget 85 days into the fiscal year**
- **State Budget could be determined after November election or as late as Governor's inauguration in January**
- **The Democratic Plan would provide \$3.4 billion more in Prop 98 funding than is proposed by the Governor**
 - **Rejects Governor's cuts to health, welfare and educational programs**
 - **Revenues generated through a tax swap**
 - **Raise Personal Income Tax - PIT**
 - **Raise Vehicle Licensing Fee - VLF**
 - **Reduce the State Sales Tax**
 - **Maintains Child Care Program - \$1.4 billion**
 - **Suspend Proposition 98**

Conference Committee Budget for Community Colleges

- **\$126 million for enrollment funding (2.21%)**
- **Rejects Negative COLA - \$23 million**
- **\$35 million to backfill one-time federal ARRA funding**
- **\$25 million augmentation for the Economic and Workforce Development program to support workforce training**
- **No cuts to EOP&S and part-time faculty compensation**
- **No augmentation to Career Technical Education Programs**
- **Reject Senate's proposed language to revise Basic Skills categorical funding formula based on success**

CITRUS COLLEGE

UNAUDITED ACTUALS: 2009-2010

Revenue

Federal	\$290,256	.5%
State	\$47,912,808	80.5%
Local	\$11,071,312	19%
Total	\$59,274,376	

CITRUS COLLEGE

UNAUDITED ACTUALS: 2009-2010

Expenditures

Academic	\$22,766,575	41%
Classified	\$13,983,141	25%
Benefits	\$12,563,927	23%
Supplies	\$1,048,251	2%
Services	\$4,882,896	8%
Equipment	\$584,447	1%
Total	\$55,829,236	

CITRUS COLLEGE

UNAUDITED ACTUALS: 2009-2010

Funded FTES	11,343
Actual FTES	11,444
89% Expenditures for Salaries & Benefits	
50% Law @ 50.02%	
2009-2010 Beginning Balance \$7,567,112	
2009-2010 Increase in Fund Balance \$931,880	
Ending Balance is 14.56% of Expenditures	

2010-2011

Funding Priorities

- **Ensure student access to classes (2.2% unfunded enrollment growth)**
- **Endeavor to maintain regular employee positions**
- **Support faculty and staff hires to meet instructional and student services support needs**
- **Ensure compliance with state and federal regulations (Full-time Faculty Hiring Obligation, 50% law, categorical funds required match)**
- **Honor institutional planning priorities**

2010-2011

Strategies for Cost Containment

- Minimize expenses in utilities, supplies, travel, memberships, consultants, contracts
- Promote the college's "Energy Smart" Plan
- Defer/reduce purchases and upgrades where possible in equipment, technology, software, etc.
- Defer the filling of vacancies where possible
- Limit on-call, extra duty and overtime assignments
- Implement the consolidation of purchasing where possible

2010-2011

Strategies for Revenue Generation

- Pursue new revenue sources (state, federal and private grants)
- Increase college facility rental agreements
- Pursue additional opportunities for contract education
- Cultivate potential donor relationships to support college needs

Funded Components of the 2010-2011 Adopted Budget

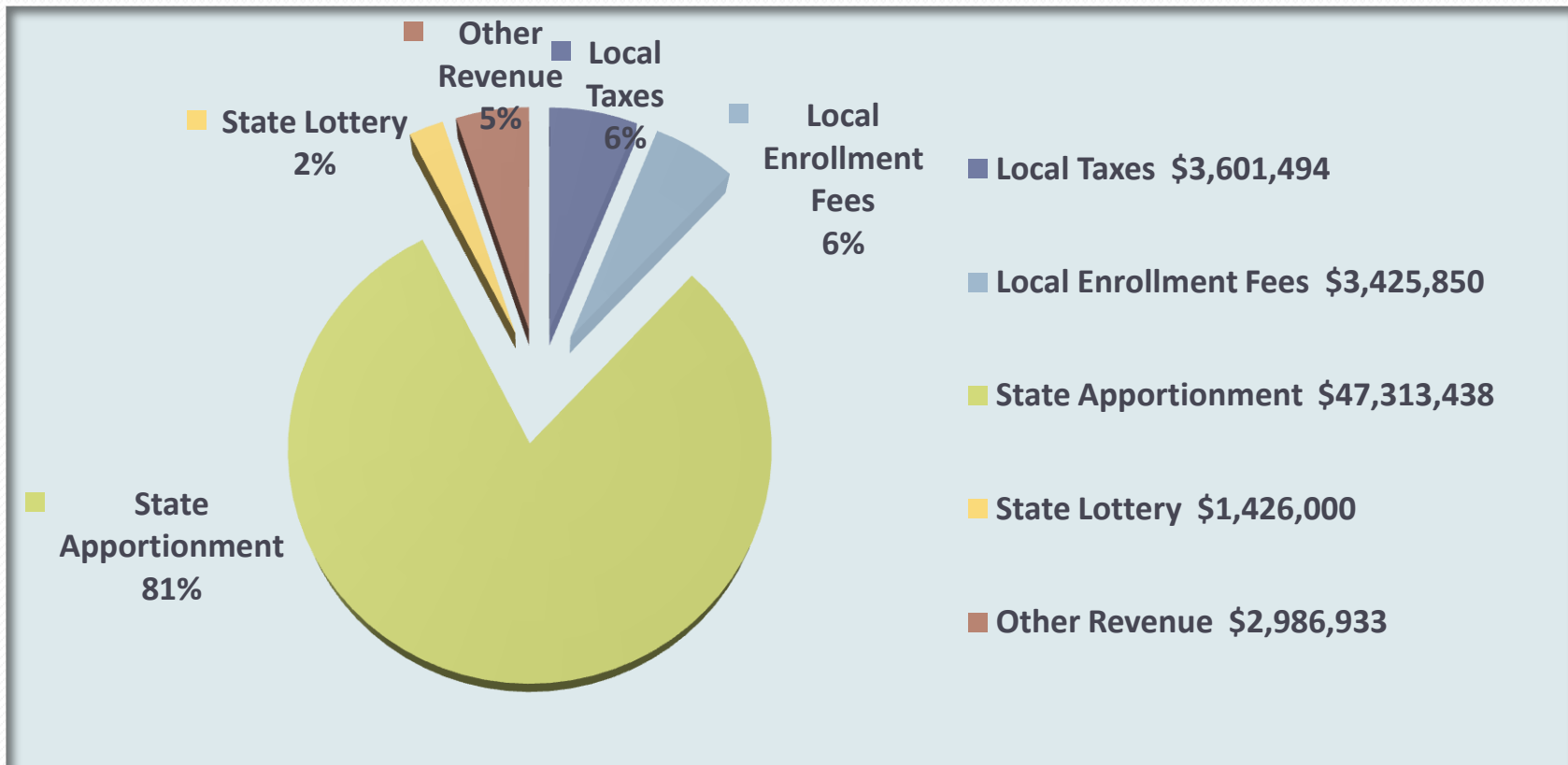
- Maintains state required 5% budget reserve
- Funds all employees Step/Column/Class Salary Adjustments
- Funds additional step to faculty salary schedule as negotiated
- Funds increases in health care premiums (Kaiser: 7.4% = \$1,107 per employee; Blue Shield: 13.78% = \$1,934 per employee)
- Funds statutory benefit increases (1.418%)
- Funds 2.2% increase in unfunded FTES
- Supports the hiring of 8 full-time faculty for spring 2011
- Supports the hiring of critical staff positions
- Supports ongoing categorical program backfill and required funding match

GENERAL FUND ADOPTED BUDGET 2010-2011

Revenue

Federal	\$21,500	.00%
State	\$49,076,126	83%
Local	\$9,656,089	17%
Total Revenue	\$58,753,715	

Total Revenue \$58,753,715



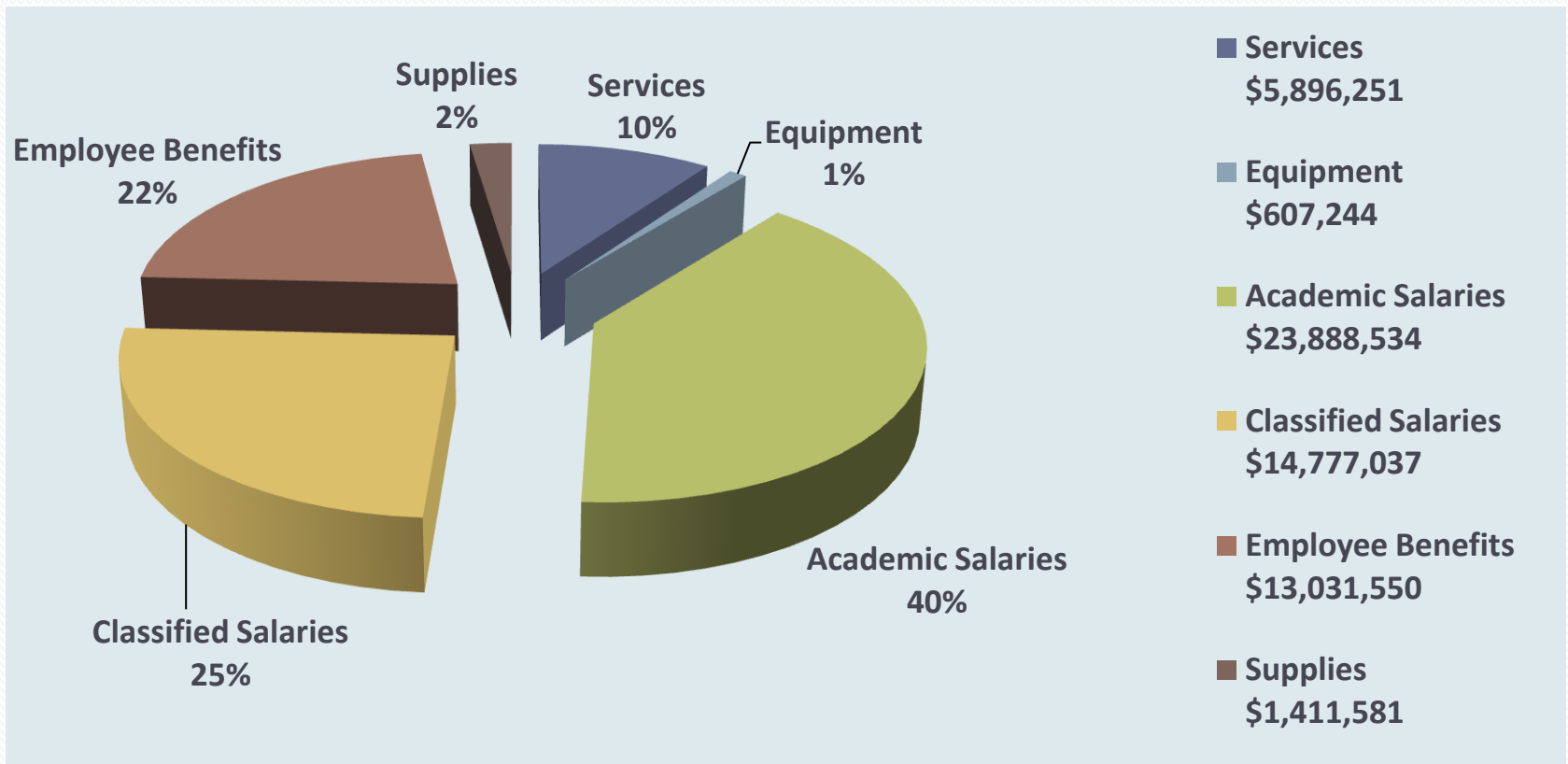
GENERAL FUND BUDGET 2010-2011

Expenditures

Academic	\$23,888,534	40%
Classified	\$14,777,037	25%
Benefits	\$13,031,550	22%
Supplies	\$1,411,581	2%
Services	\$5,896,251	10%
Equipment	\$607,244	1%
Total	\$59,612,197	

Total Expenditure

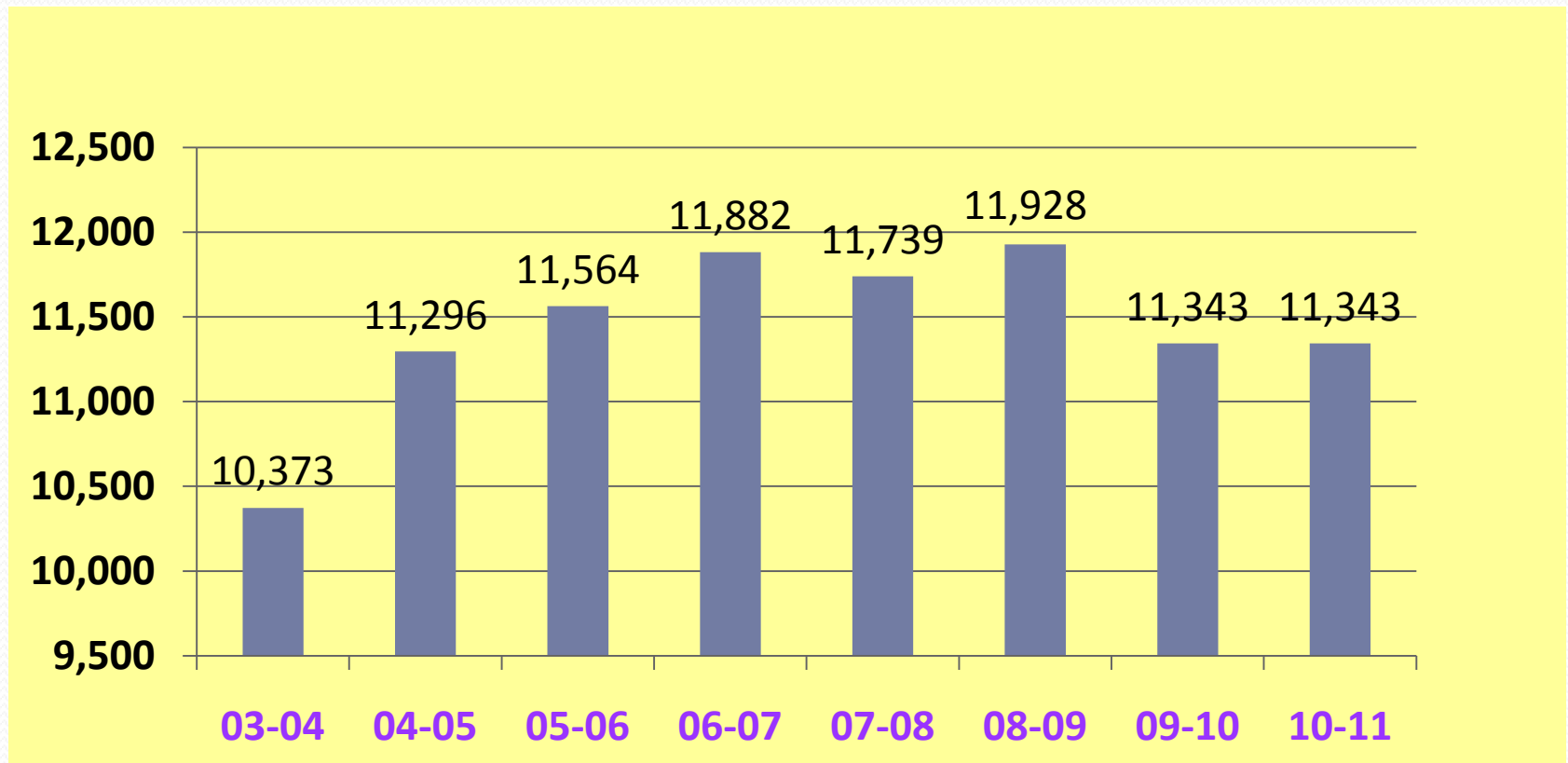
\$59,612,197



GENERAL FUND ADOPTED BUDGET 2010-2011

Estimated Ending Balance	\$6,164,147 @ 10.256%
Estimated Funded FTES	11,343
Deficit Spending	\$2,314,107

Citrus Community College District Summary of Funded FTES



Budget Calendar 2010-2011

- 3/03/10** Budget Calendar & Budget Assumptions approved by Financial Resources Committee
- 4/06/10** Budget Calendar and Budget Assumptions provided to Board of Trustees
- 4/07/10** Budget worksheets out to Superintendent, Vice Presidents and Cost Center Managers
- 5/07/10** Budget worksheets due to Business Office
- 6/02/10** Tentative Budget reviewed by Financial Resources Committee
- 6/08/10** Adoption of Tentative Budget by Board of Trustees
- July/Aug** Monitor State budget developments making modifications to Tentative Budget
- 9/21/10** Budget Forum
- 10/05/10** Adopt District Budget for 2010-2011